

Invitation for participation
The 10th Informal Thematic Tourney of
"The Problemistic Courier"
Fairies with Castling Chess condition 2020

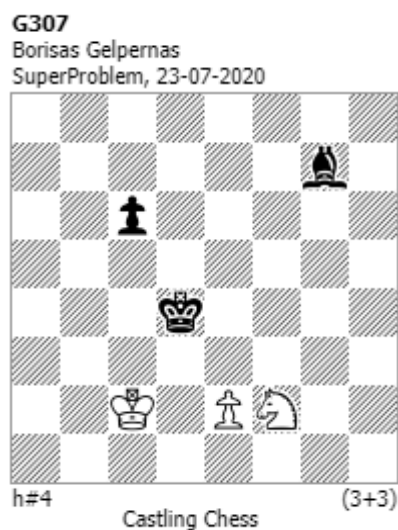
The "Curierul Problemistic" magazine announces an informal thematic tourney. The competition will have two sections, the registered problems in the tourney will be published on magazine.

Section A Fairies all genres with Castling Chess condition. No other condition or fairies pieces. Free theme. See example.

Section B Fairies all genres with Castling Chess condition & one or more of the following pieces: Grasshopper (G), Locust (L), Kangaroo (KA), Zebra (Z), Antelope (AN), Gnu (GN), Camel (CA), Giraffe (GI), Squirell (SQ) and Querquisite (QQ). Free theme.

Send the problems to the director of the tourney who will be the judge: Gurgui Dan-Constantin contact@e4e5magazine.eu. A participant can publish unlimited problems, including the co-author. The preliminary and final awards of the tourney will be sent to participants by e-mail and will be published on the "Curierul Problemistic" magazine in 2021. Closing date: December 22nd, 2020. Please reprint!

Example:

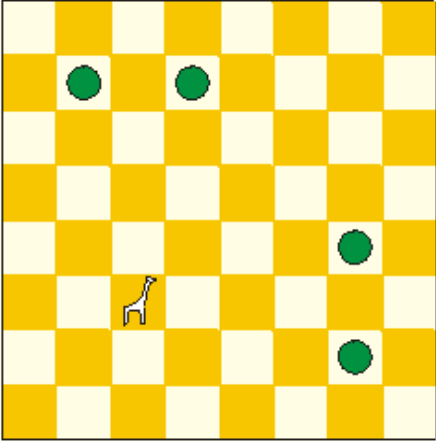
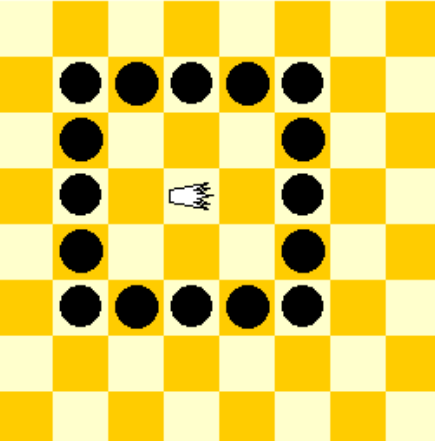
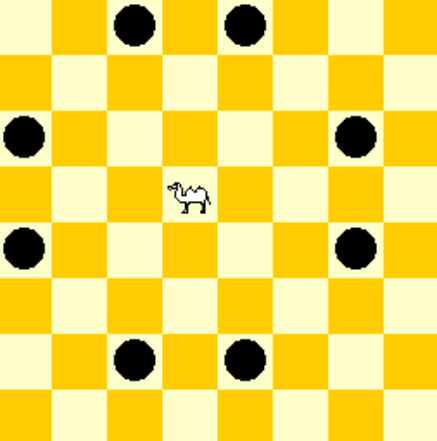
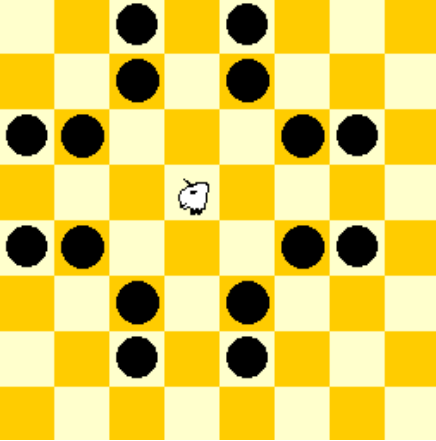
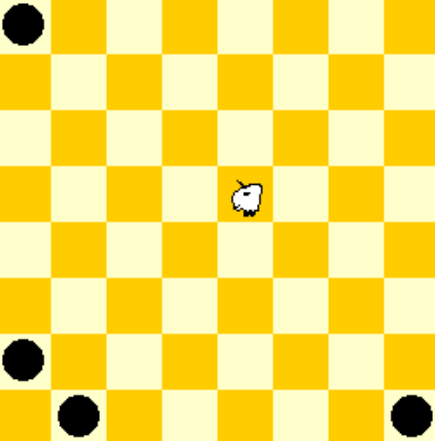
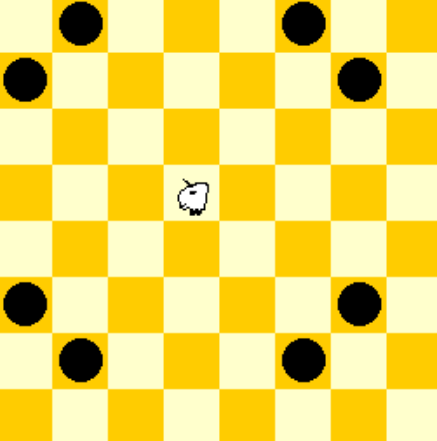
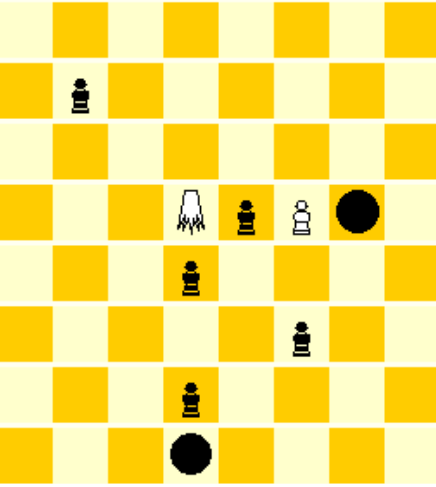
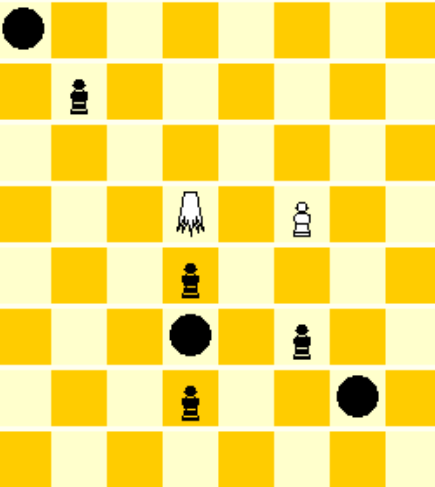
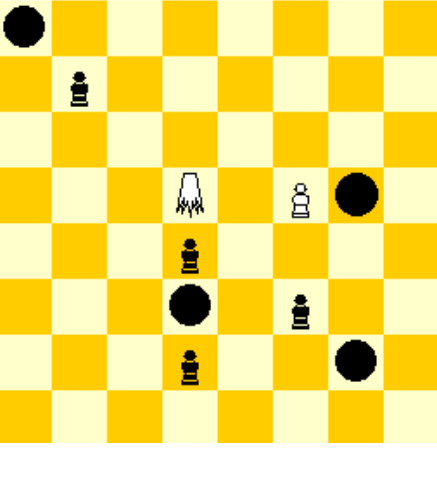


G307 (solution | решение)- Borisas Gelpernas (Lithuania)8/6b1/2p5/8/3k4/8/2K1PN2/8

1.Kf6/bBe5 e4 2.Kd6/bPe6 Ke2/wSd2 3.Bf6 Ke3 4.Ke5 Sc4#.

Castling Chess – A King can castle with ANY piece (including enemies), both diagonally and orthoganally, by moving two squares toward it. The other piece is placed on the opposite side of the King. The checking rules from normal castling apply.

Fairy pieces accepted:

<p>Giraffe (GI)</p> 	<p>Squirell (SQ)</p> 	<p>Camel (CA)</p> 
<p>Gnu (GN)</p> 	<p>Antelope (AN)</p> 	<p>Zebra (Z)</p> 
<p>Kangaroo (KA)</p> 	<p>Locust (L)</p> 	<p>Grasshopper (G)</p> 

All registered problems are online on http://www.e4e5magazine.eu/CP_5_2020.pdf

Please reprint!